



# EYES OF THE REEF

## HAWAII'S CORAL BLEACHING, DISEASE AND MARINE INVASIVE SPECIES MONITORING NETWORK

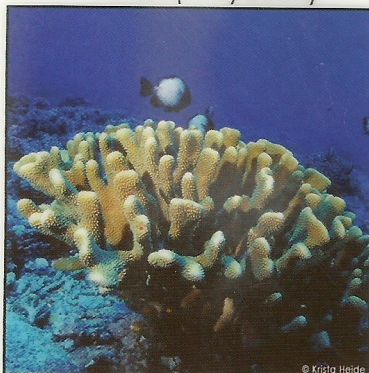


To make a report, please call: (808) 953-4044 or submit your report online at:  
<http://www.reefcheckhawaii.org/eyesofthereef.htm>

Common types of coral seen throughout the Hawaiian Islands. Learn what these healthy corals should look like in order to identify and recognize impacted or diseased coral colonies.

### Distinct Branching Corals (*Pocillopora*)

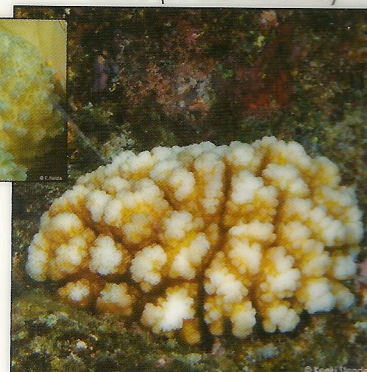
Antler (*P. eydouxi*)



Califlower (*P. meandrina*)



Lace (*P. damicornis*)

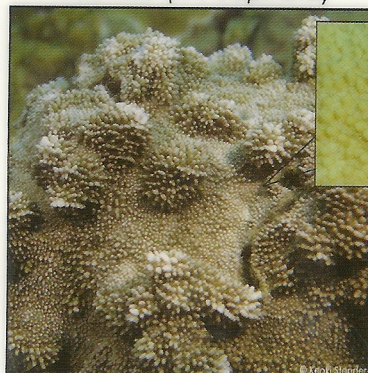


### Rice Corals (*Montipora*)

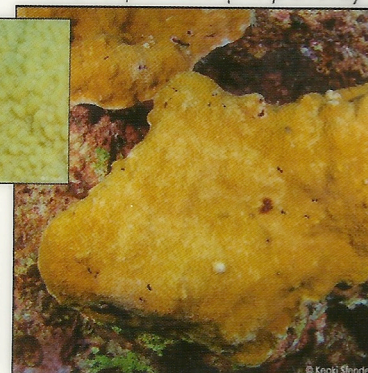
Blue rice (*M. flabellata*)



Red rice (*M. capitata*)



Tan/Purple rice (*M. patula*)

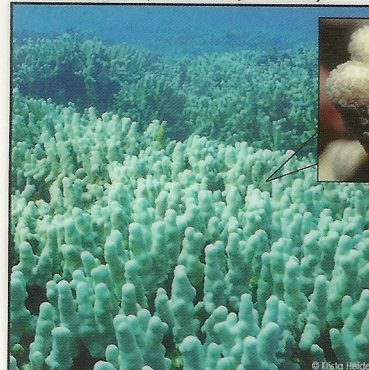


### Smooth Corals (*Porites*)

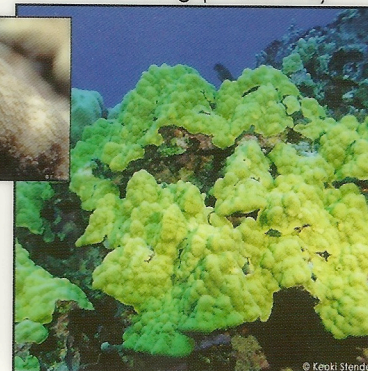
Plating (*P. rus*)



Finger (*P. compressa*)



Mounding (*P. lobata*)







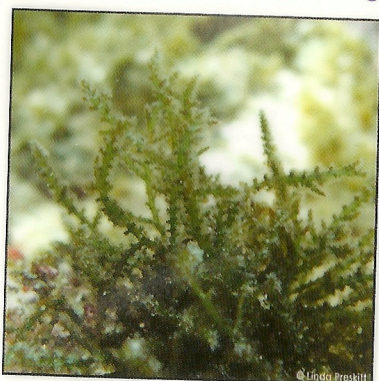
# EYES OF THE REEF

## HAWAII'S CORAL BLEACHING, DISEASE AND MARINE INVASIVE SPECIES MONITORING NETWORK



To make a report, please call: (808) 953-4044 or submit your report online at:  
<http://www.reefcheckhawaii.org/eyesofthereef.htm>

Please report sightings of these marine invasive species found throughout the Hawaiian Islands



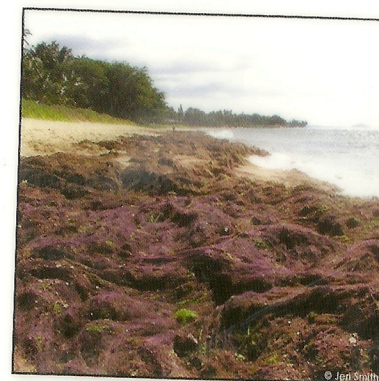
**Acanthophora spicifera/**  
**Prickly Seaweed** The most widely dispersed alien alga in Hawai'i.



**Avrainvillea amadelpha/**  
**Leather Mudweed** An alien alga found on O'ahu's south shore.



**Gracilaria salicornia/Gorilla**  
**Seaweed** An alien alga on O'ahu, Moloka'i and Hawai'i.



**Hypnea musciformis/Hookweed**  
 An alien alga that commonly washes up on Maui and O'ahu.



**Kappaphycus & Eucheuma spp.**  
**Smothering Seaweed** Possibly the most destructive alien algae in Hawai'i.



**Cassiopea spp.** An alien jellyfish found in harbors and lagoons throughout Hawai'i.



**Carilloa sp./Snowflake coral**  
 An alien octocoral that threatens native coral habitat.



**Leptolyngbya crosbyana** A native algal bloom in Hawai'i smothers the coral reef in Honaunau Bay.





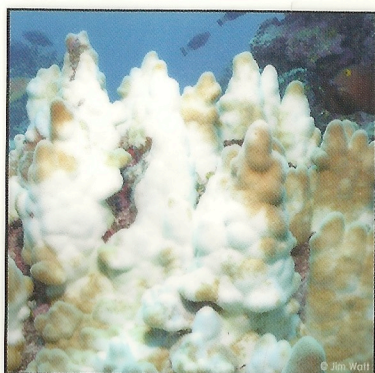
# EYES OF THE REEF

## HAWAII'S CORAL BLEACHING, DISEASE AND MARINE INVASIVE SPECIES MONITORING NETWORK



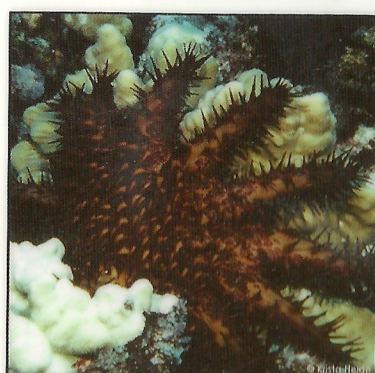
To make a report, please call: (808) 953-4044 or submit your report online at:  
<http://www.reefcheckhawaii.org/eyesofthereef.htm>

Please report incidents of coral bleaching and disease, Crown-of-Thorns Sea Star outbreaks & marine invasive species. Watch out for natural impacts such as predation, invasion, abrasion and algal or coral competition that may be easily mistaken for disease.



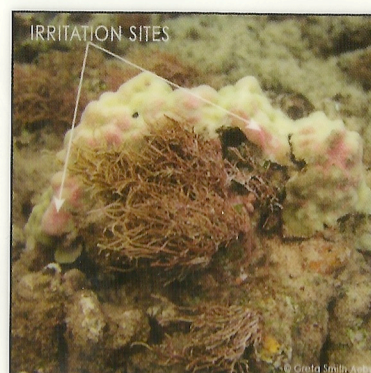
### Bleached Coral Colony

Bleaching = Loss of color; polyps are still present.

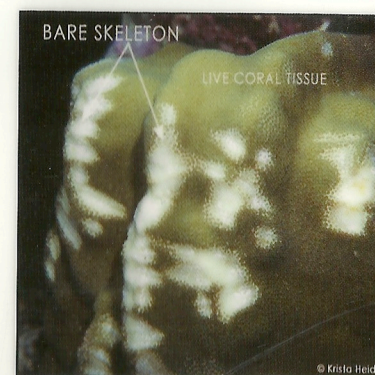


### Crown-of-Thorns Sea Star:

"COTS" Natural coral predators in the Hawaiian reef ecosystem.

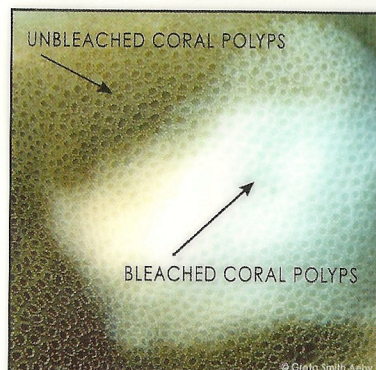


Algal Abrasion: Abrasion and stress on *Porites* = pink irritation sites.



### Predation, Parrotfish:

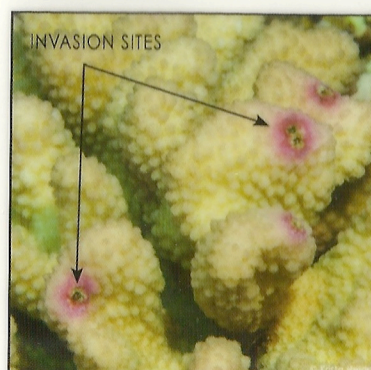
Predation = Bare white skeleton.



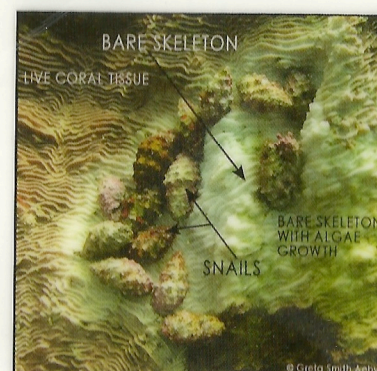
Bleached Polyps: Gradation from dark to white. Polyps are still present.



Predation, COTS: Note distinct color change between live coral & bare white skeleton.



Invasion, Kahe Crab: Naturally occurring relationship; causes irritation to the coral host.



Predation, Drupella Snail: Predation = Bare white skeleton with algae growth.





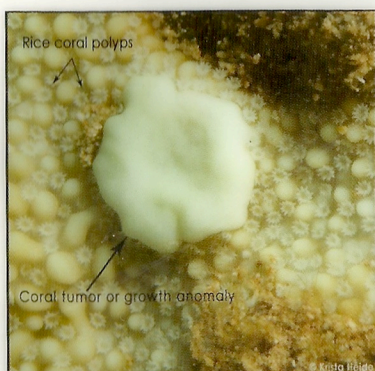
# EYES OF THE REEF

## HAWAII'S CORAL BLEACHING, DISEASE AND MARINE INVASIVE SPECIES MONITORING NETWORK



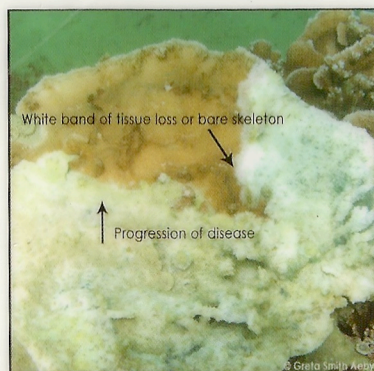
To make a report, please call: (808) 953-4044 or submit your report online at:  
<http://www.reefcheckhawaii.org/eyesofthereef.htm>

Please keep an eye out for these common coral diseases found throughout the Hawaiian Islands



### Montipora Growth Anomalies

Growth is often smooth or lacking polyps.



### Montipora White Syndrome

Note the white band of tissue loss where disease progresses across coral colony.



### Montipora Band Disease

Note the dark band of necrosis where disease progresses across coral colony.

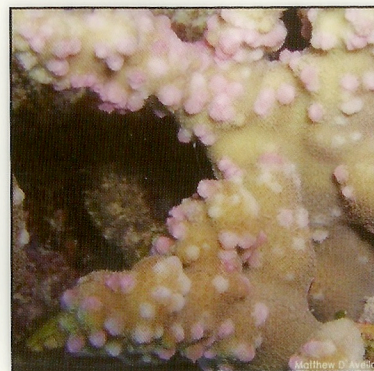


### Pavona Endolithic Hypermycosis

Diseased corrugated coral becomes purple or red.



**Porites Growth Anomaly:** Note change in color and distinct border between healthy coral tissue and abnormal growth.



**Porites Trematodiasis:** "Coral Zits" Parasitic flatworms cause the coral to form pink and swollen nodules.



**Porites Multi-focal Tissue Loss** Multiple areas of tissue loss or bare skeleton.



**Porites Tissue Loss** Note how disease progresses outward from center where algae growth is the greatest.